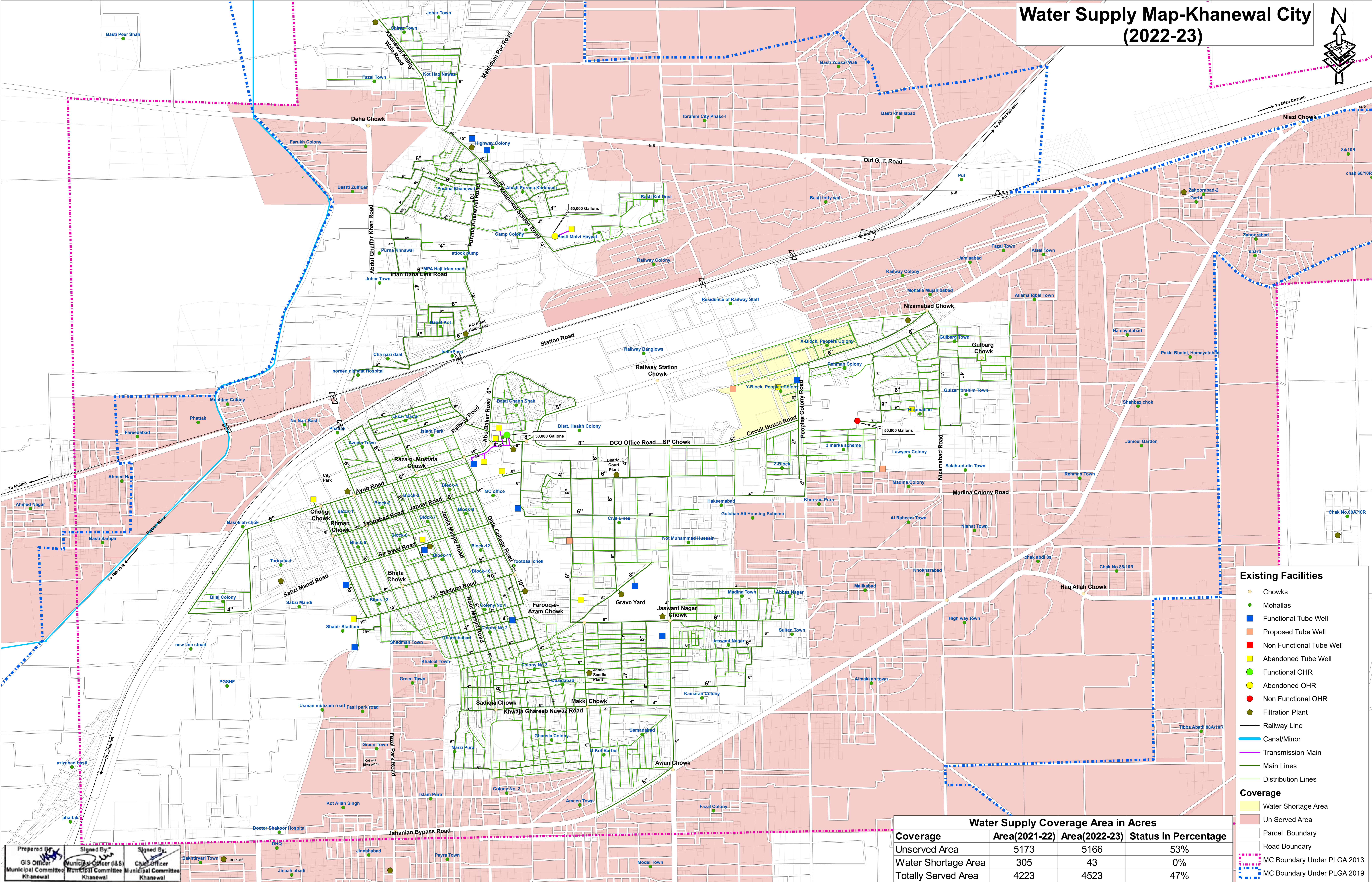
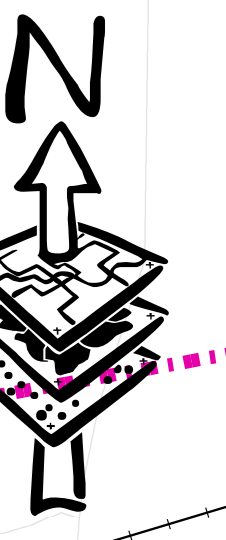


Water Supply Map-Khanewal City (2022-23)



- Existing Facilities**
- Chowks
 - Mohallas
 - Municipal Tube Well
 - Proposed Tube Well
 - Non Functional Tube Well
 - Abandoned Tube Well
 - Functional OHR
 - Abandoned OHR
 - Non Functional OHR
 - Filtration Plant
 - Railway Line
 - Canal/Minor
 - Transmission Main
 - Main Lines
 - Distribution Lines
- Coverage**
- Water Shortage Area
 - Un Served Area
 - Parcel Boundary
 - Road Boundary
 - MC Boundary Under PLGA 2013
 - MC Boundary Under PLGA 2019

Water Supply Coverage Area in Acres			
Coverage	Area(2021-22)	Area(2022-23)	Status In Percentage
Unservd Area	5173	5166	53%
Water Shortage Area	305	43	0%
Totally Served Area	4223	4523	47%

Prepared By: GIS Officer, Municipal Committee, Khanewal
 Signed By: Municipal Officer (I&S), Municipal Committee, Khanewal
 Signed By: Chief Officer, Municipal Committee, Khanewal

PUNJAB MUNICIPAL DEVELOPEMENT FUND COMPANY

PROJECT:
PUNJAB CITIES PROGRAM (PCP)

Map Code
 0622030223
Map Version
 1.4

DISCLAIMER:
 INFORMATION IS PROVIDED BY MC, PHED & OTHER SOURCES.

Scale:
 1:6,500

Date
 February 2023