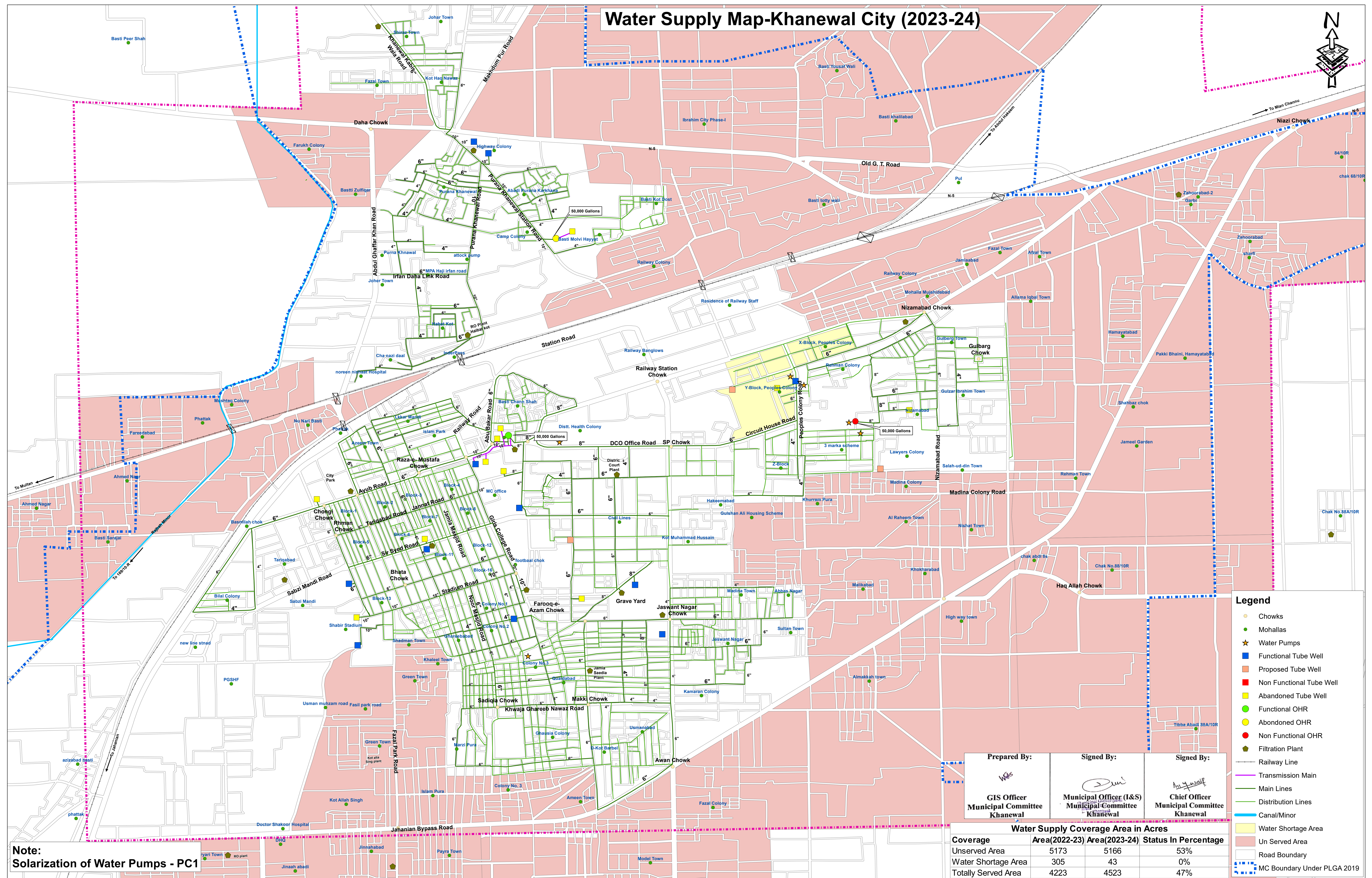
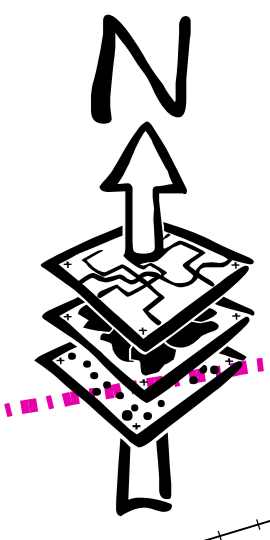


Water Supply Map-Khanewal City (2023-24)



Legend

- Chowks
- Mohallas
- ★ Water Pumps
- Functional Tube Well
- Proposed Tube Well
- Non Functional Tube Well
- Abandoned Tube Well
- Functional OHR
- Abandoned OHR
- Non Functional OHR
- Filtration Plant
- Railway Line
- Transmission Main
- Main Lines
- Distribution Lines
- Canal/Minor
- Water Shortage Area
- Un Served Area
- Road Boundary
- MC Boundary Under PLGA 2019

Prepared By: GIS Officer Municipal Committee Khanewal	Signed By: Municipal Officer (I&S) Municipal Committee Khanewal	Signed By: Chief Officer Municipal Committee Khanewal
--	--	--

Water Supply Coverage Area in Acres			
Coverage	Area(2022-23)	Area(2023-24)	Status In Percentage
Unserved Area	5173	5166	53%
Water Shortage Area	305	43	0%
Totally Served Area	4223	4523	47%

Note:
Solarization of Water Pumps - PC1

PUNJAB MUNICIPAL DEVELOPEMENT FUND COMPANY PROJECT:
PUNJAB CITIES PROGRAM (PCP)

Map Code
0622030424
Map Version
1.5

DISCLAIMER:
INFORMATION IS PROVIDED BY MC, PHED & OTHER SOURCES.

Scale:
1:6,000

Date
April 2024